

## NJM4558/4559

The NJM4558/4559 integrated circuit are a dual high-gain operational amplifier internally compensated and constructed on a single silicon chip using an advanced epitaxial process.

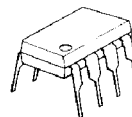
Combining the features of the NJM741 with the close parameter matching and tracking of a dual device on a monolithic chip results in unique performance characteristics. Excellent channel separation allow the use of the dual device in single NJM741 operational amplifier applications providing density. It is especially well suited for applications in differential-in, differential-out as well as in potentiometric amplifiers and where gain and phase matched channels are mandatory.

### Package Outline

### Absolute Maximum Ratings (Ta=25°C)

Supply Voltage	V <sup>+</sup> /V <sup>-</sup>	±18V
Differential Input Voltage	V <sub>ID</sub>	±30V
Input Voltage (note)	V <sub>I</sub>	±15V
Power Dissipation	P <sub>D</sub> (D-Type)	500mW
	(M,E-Type)	300mW
	(L-Type)	800mW
Operating Temperature Range	T <sub>opr</sub>	-20~+75°C
Storage Temperature Range	T <sub>stg</sub>	-40~+125°C

(note) For supply voltage less than ±15V, the absolute maximum input voltage is equal to the supply voltage.



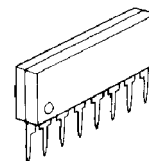
NJM4558D  
NJM4559D



NJM4558M  
NJM4559M



NJM4558E  
NJM4559E



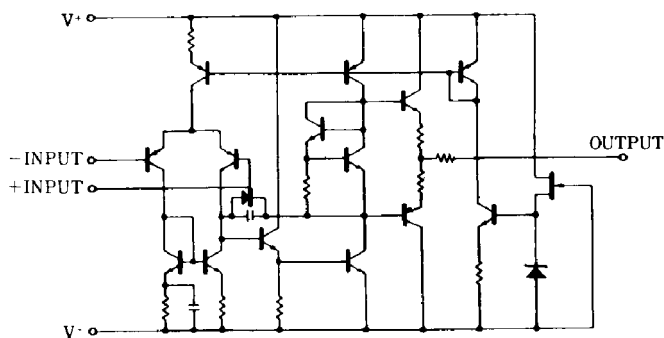
NJM4558L  
NJM4559L

### Electrical Characteristics (Ta=25°C, V<sup>+</sup>/V<sup>-</sup>=±15V)

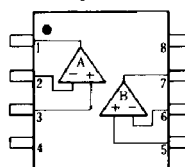
Parameter	Symbol	Test Condition	Min.	Typ.	Max.	Unit
Input Offset Voltage	V <sub>IO</sub>	R <sub>S</sub> ≤ 10kΩ	—	0.5	6	mV
Input Offset Current	I <sub>IO</sub>		—	5	200	nA
Input Bias Current	I <sub>B</sub>		—	50	500	nA
Input Resistance	R <sub>IN</sub>		0.3	5	—	MΩ
Large Signal Voltage Gain	A <sub>V</sub>	R <sub>L</sub> ≥ 2kΩ, V <sub>O</sub> = ±10V	86	100	—	dB
Maximum Output Voltage Swing 1	V <sub>OM1</sub>	R <sub>L</sub> ≥ 10kΩ	±12	±14	—	V
Maximum Output Voltage Swing 2	V <sub>OM2</sub>	R <sub>L</sub> ≥ 2kΩ	±10	±13	—	V
Input Common Mode Voltage Range	V <sub>ICM</sub>		±12	±14	—	V
Common Mode Rejection Ratio	CMR	R <sub>S</sub> ≤ 10kΩ	70	90	—	dB
Supply Voltage Rejection Ratio	SVR	R <sub>S</sub> ≤ 10kΩ	76.5	90	—	dB
Supply Current	I <sub>CC</sub>		—	3.5	5.7	mA
Slew Rate	SR		—	1	—	V/μs
NJM4558	SR		—	2	—	V/μs
NJM4559	SR		—	2	—	V/μs
Equivalent Input Noise Voltage	V <sub>NI</sub>	RIAA, R <sub>S</sub> = 1kΩ, 30kHz LPF	—	1.4	—	μVrms

### Connection Diagram

#### Equivalent Circuit (1/2 Shown)



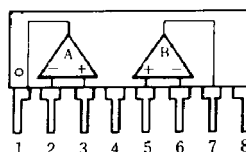
D,M,E-Type  
(Top View)



#### PIN FUNCTION

1. A OUTPUT
2. A-INPUT
3. A+INPUT
4. V<sup>-</sup>
5. B+INPUT
6. B-INPUT
7. B OUTPUT
8. V<sup>+</sup>

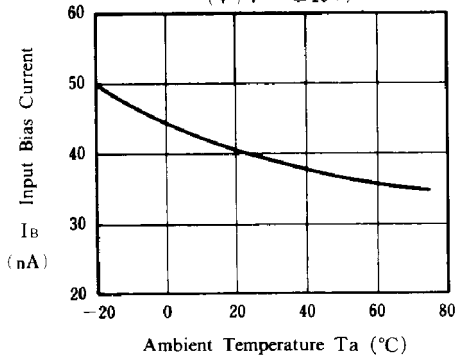
L-Type



■ Typical Characteristics

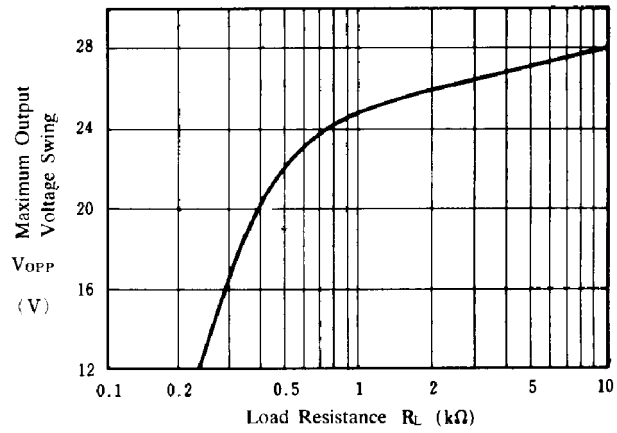
Input Bias Current vs. Ambient

( $V^+/V^- = \pm 15V$ )



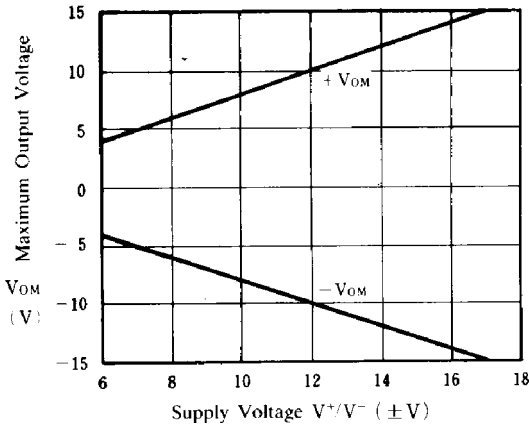
Maximum Output Voltage Swing vs. Load Resistance

( $V^+/V^- = \pm 15V, T_a = 25^\circ C$ )



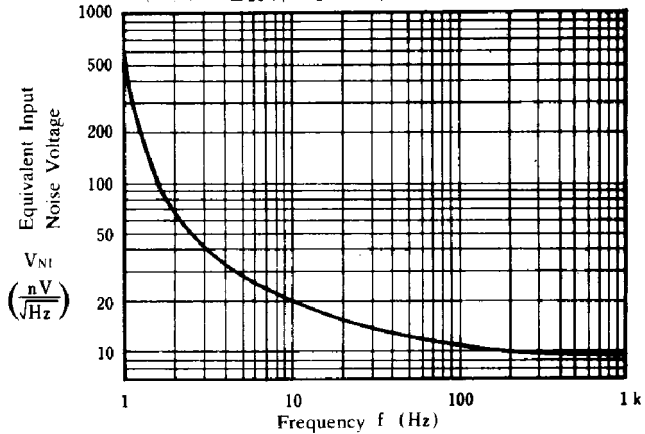
Maximum Output Voltage Swing vs. Supply Voltage

( $R_L = 2k\Omega, T_a = 25^\circ C$ )



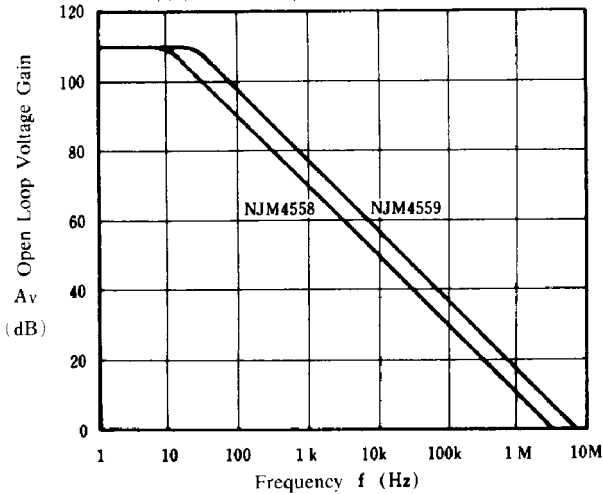
Equivalent Input Noise Voltage vs. Frequency

( $V^+/V^- = \pm 15V, R_S = 50\Omega, A_v = 60dB, T_a = 25^\circ C$ )



Open Loop Voltage Gain vs. Frequency

( $V^+/V^- = \pm 15V, R_L = 2k\Omega, T_a = 25^\circ C$ )



Maximum Output Voltage Swing vs. Frequency

( $V^+/V^- = \pm 15V, R_L = 2k\Omega, T_a = 25^\circ C$ )

